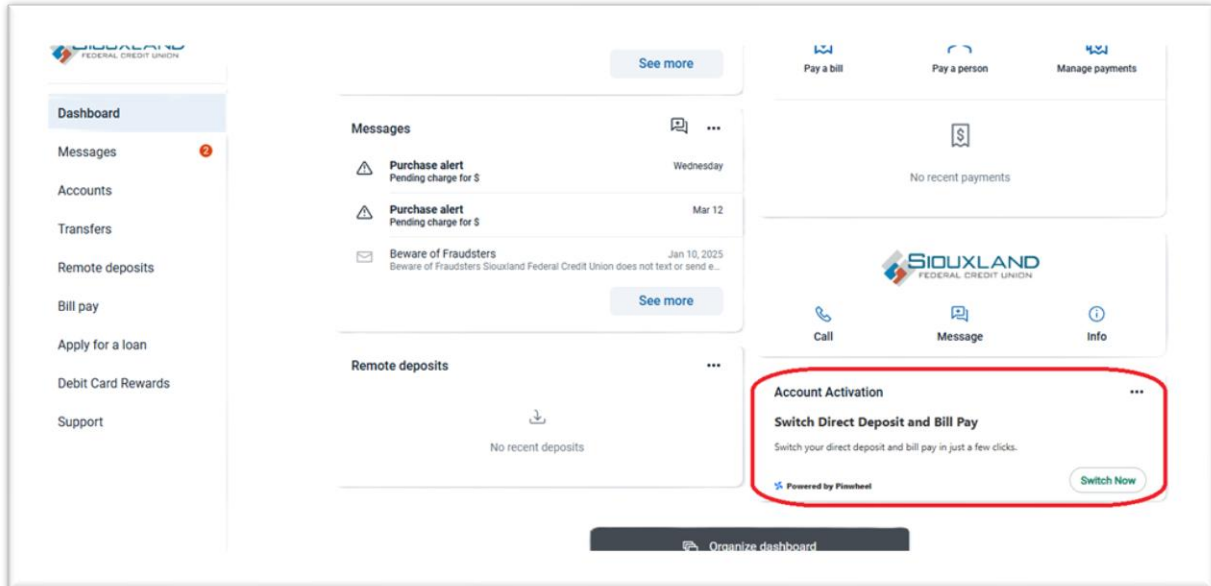


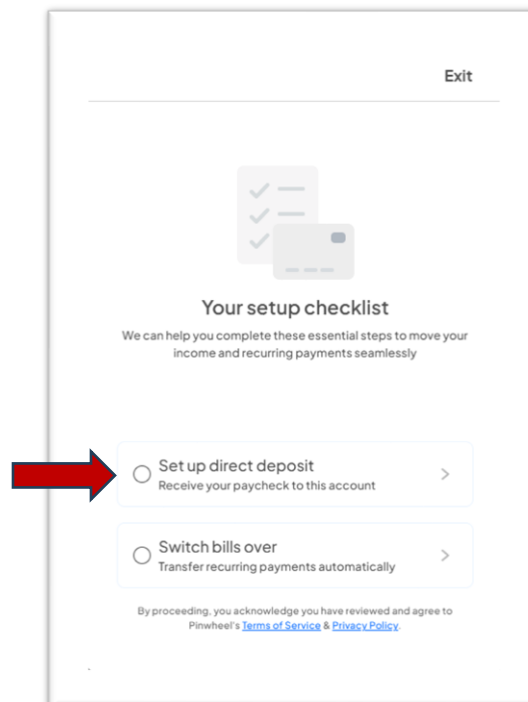
How to Switch Direct Deposit / Bill Pay to Siouxland Federal CU

- Sign into your online banking. Then scroll down to Account Activation to start.

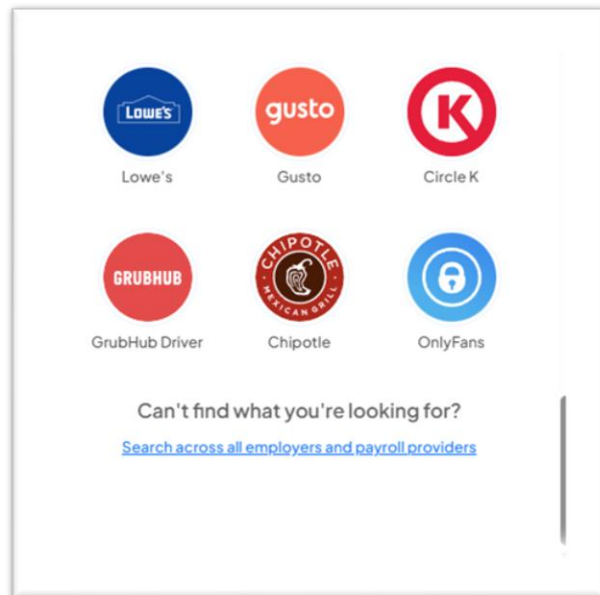
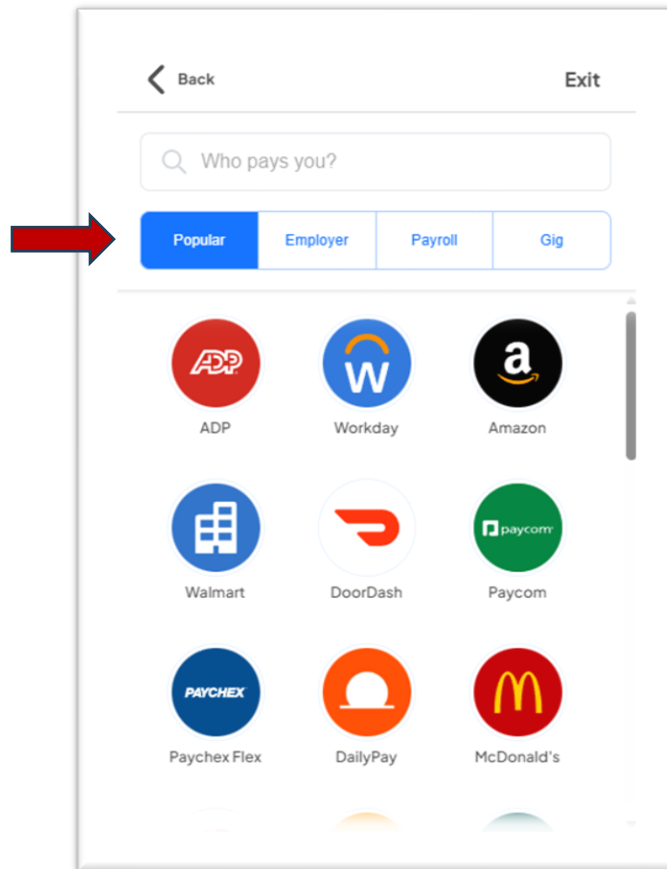


Steps to Set up Direct Deposit

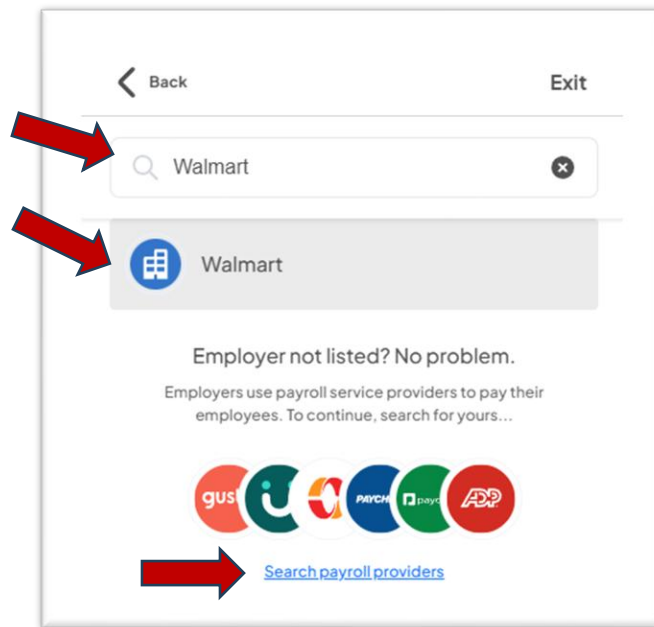
- Select the Set up direct deposit button



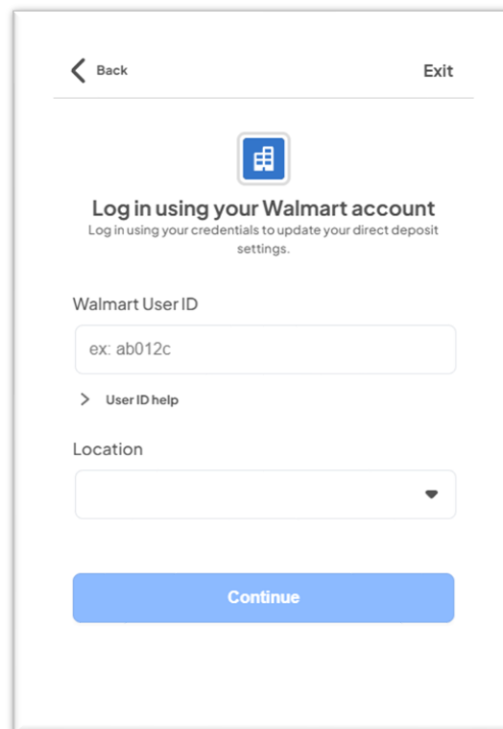
- Choose by Popular, Employer, Payroll, or Gig options



- Or use the search option for what you are looking for. If it is listed, it will populate. Click on the provider icon. If you don't see it, you can search by payroll providers.

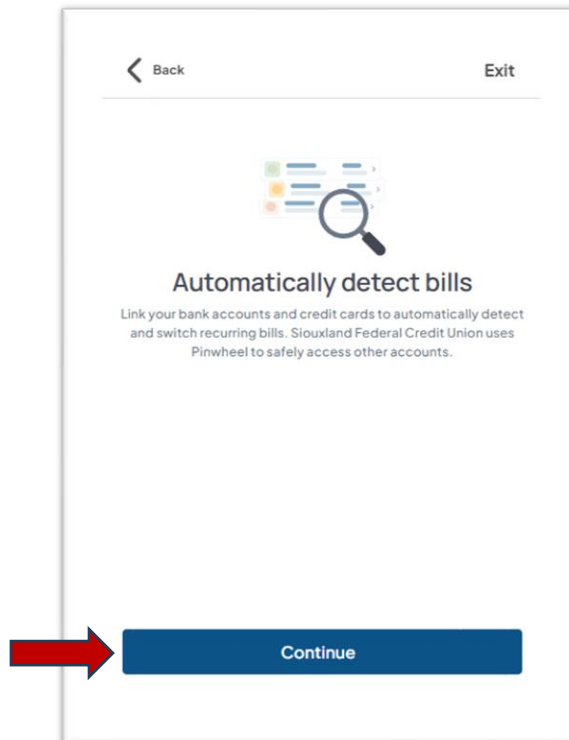
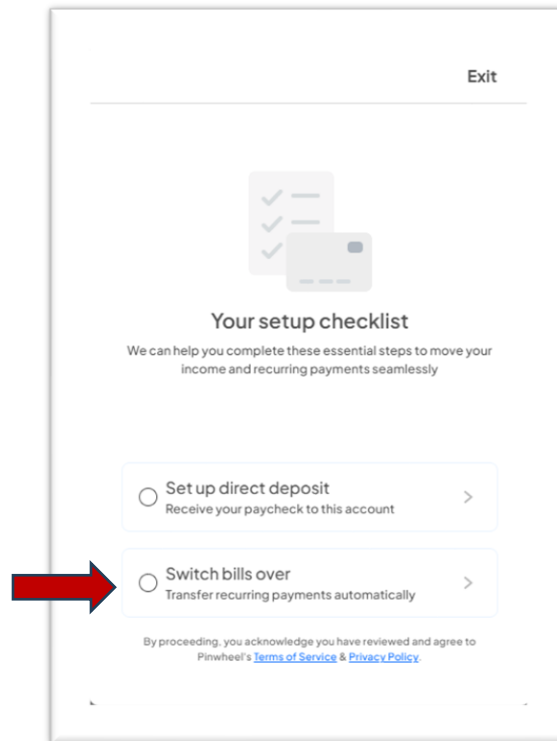


- A login page to the account you chose will appear. Log in and follow the instructions.
- Make sure to have your login credentials for your accounts to log into.

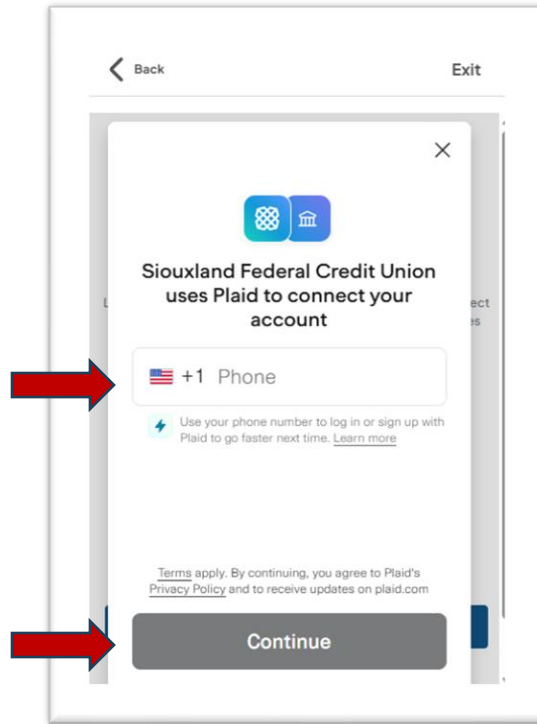


Steps to Switch Bills

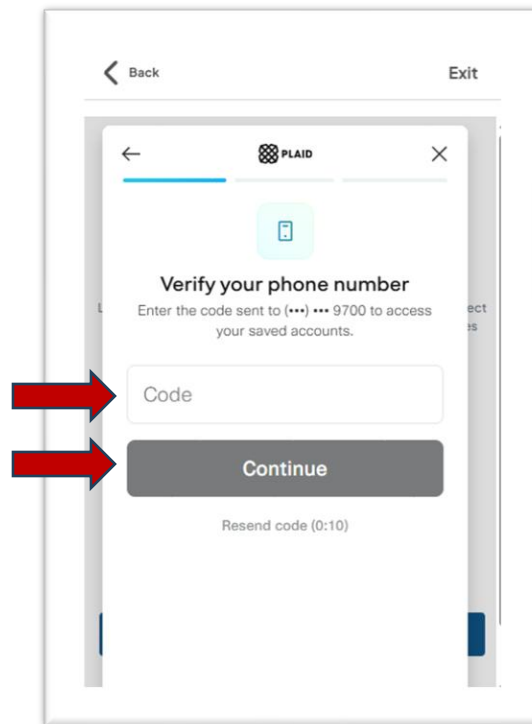
- Select the Switch bills over button. Then click Continue on the next screen.



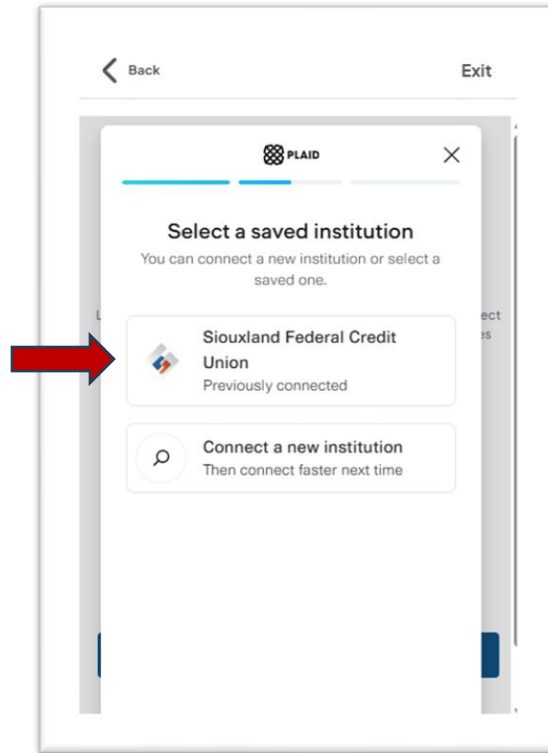
- We use Plaid to connect your accounts. Add your phone # and click Continue.



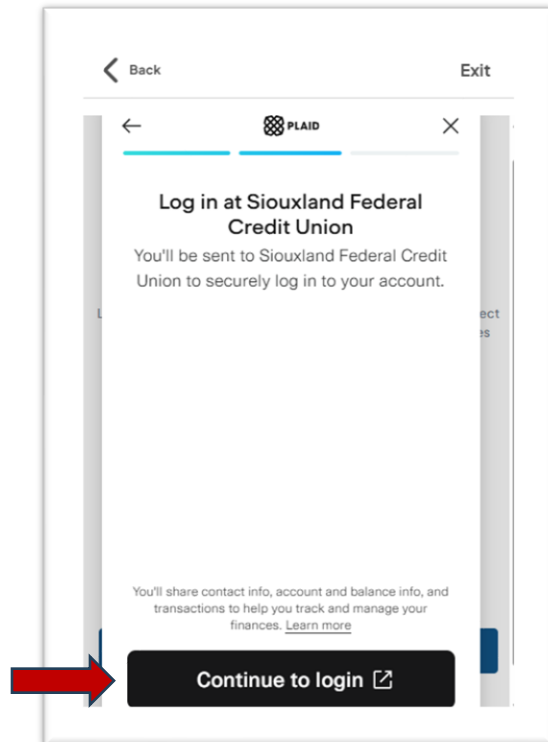
- Enter the code you received to your phone from Plaid and click Continue.



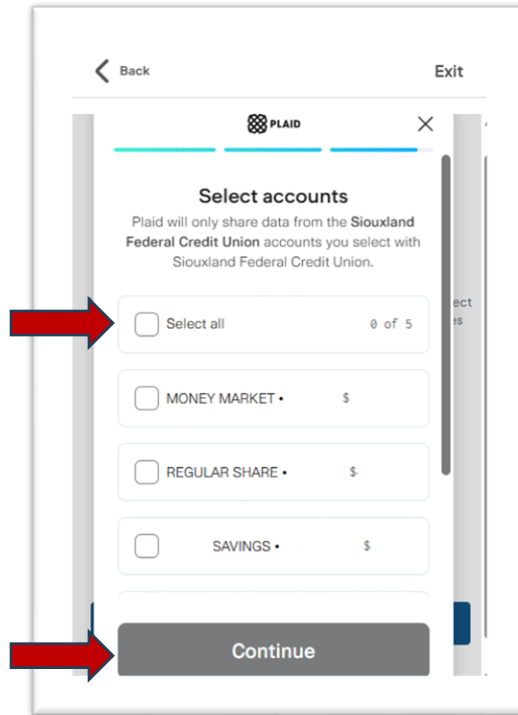
- Click on the account with your bill pay or connect to a new institution.



- Make sure to have your login credentials for your accounts to log into.



- Select the account(s) and click Continue.



- The system will scan for accounts that have any recurring subscriptions or bills. You will receive an email from Plaid that you have connected your bank account to Siouxland Federal Credit Union with Plaid. Continue to complete the process.

